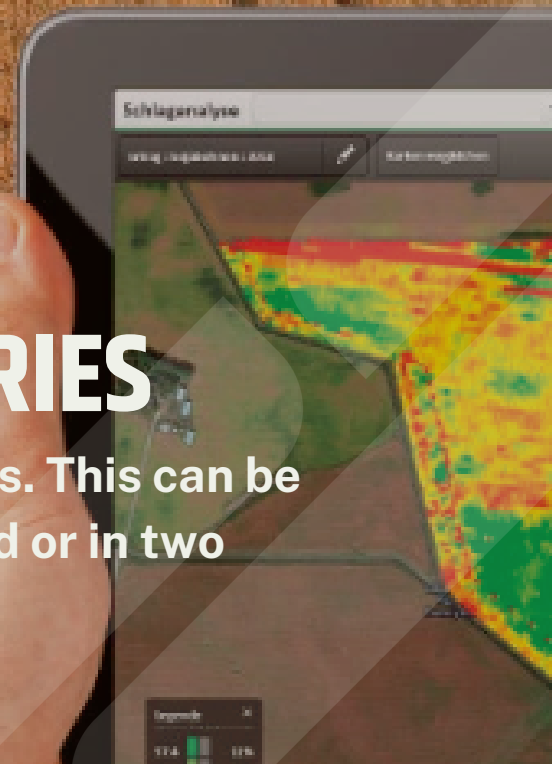


MERGING FIELD BOUNDARIES

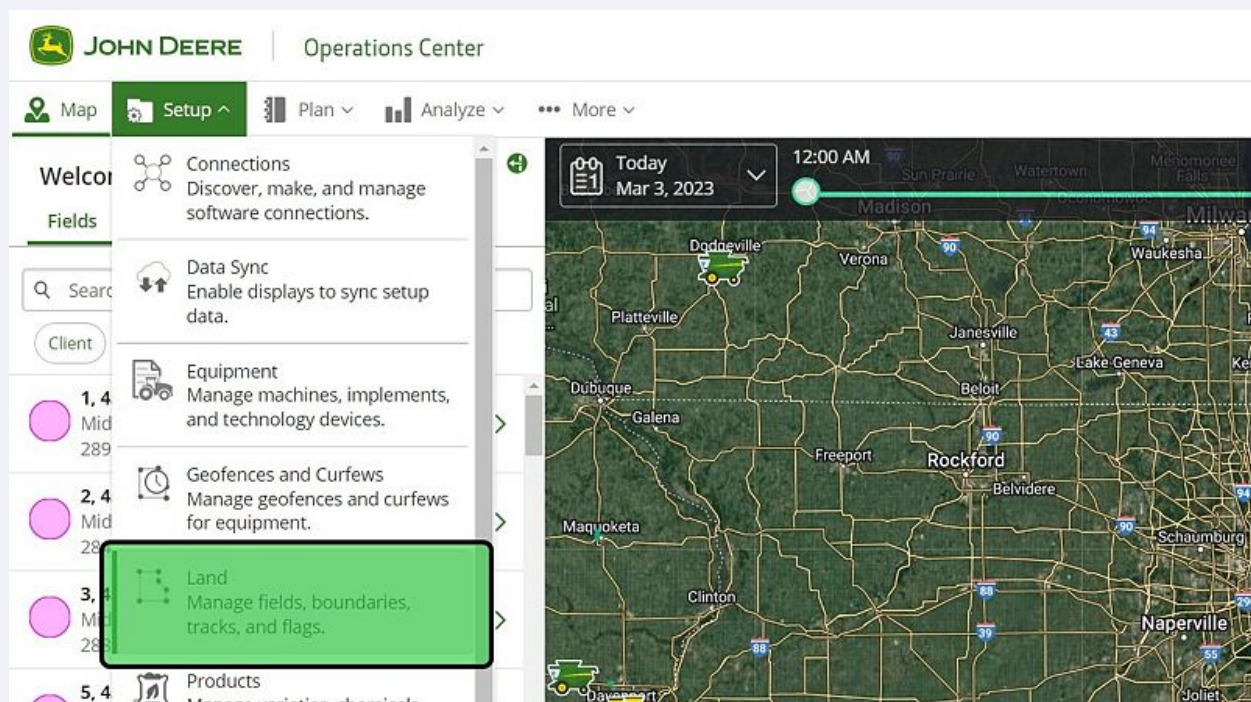
Use this How To guide to merge boundaries. This can be done when boundaries are in the same field or in two separate fields.



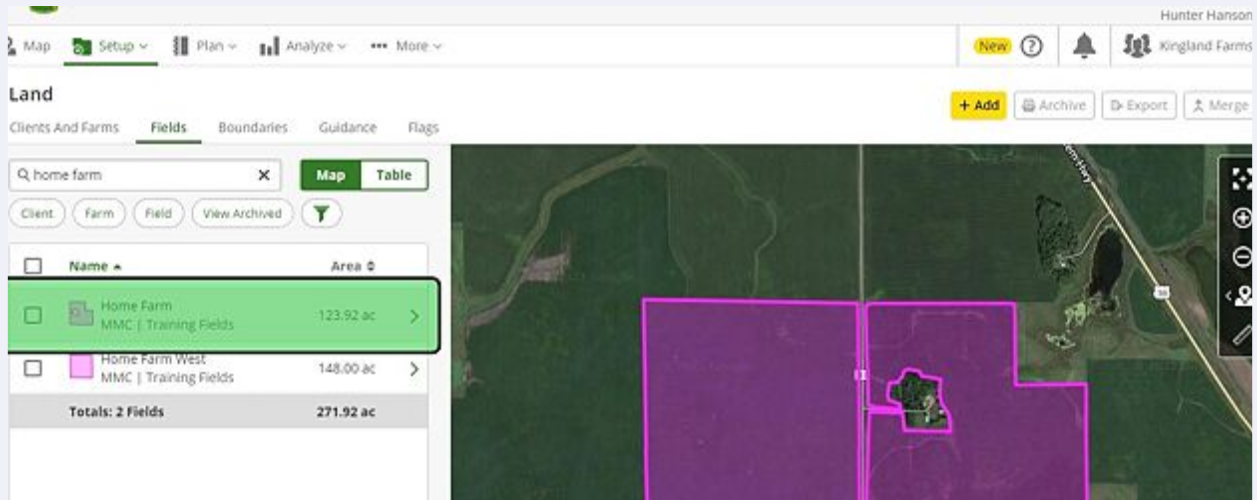
Operations Center - Merging Field Boundaries

Use this How To guide to merge boundaries. This can be done when boundaries are in the same field or in two separate fields.

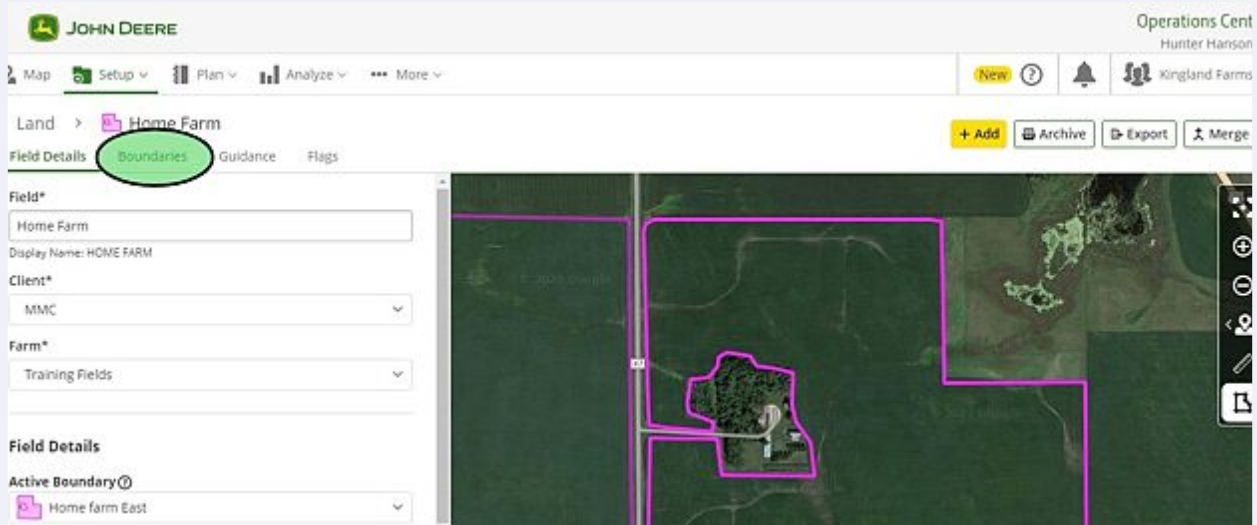
- 1 Select "Land" under the "Setup" menu at the top of the screen



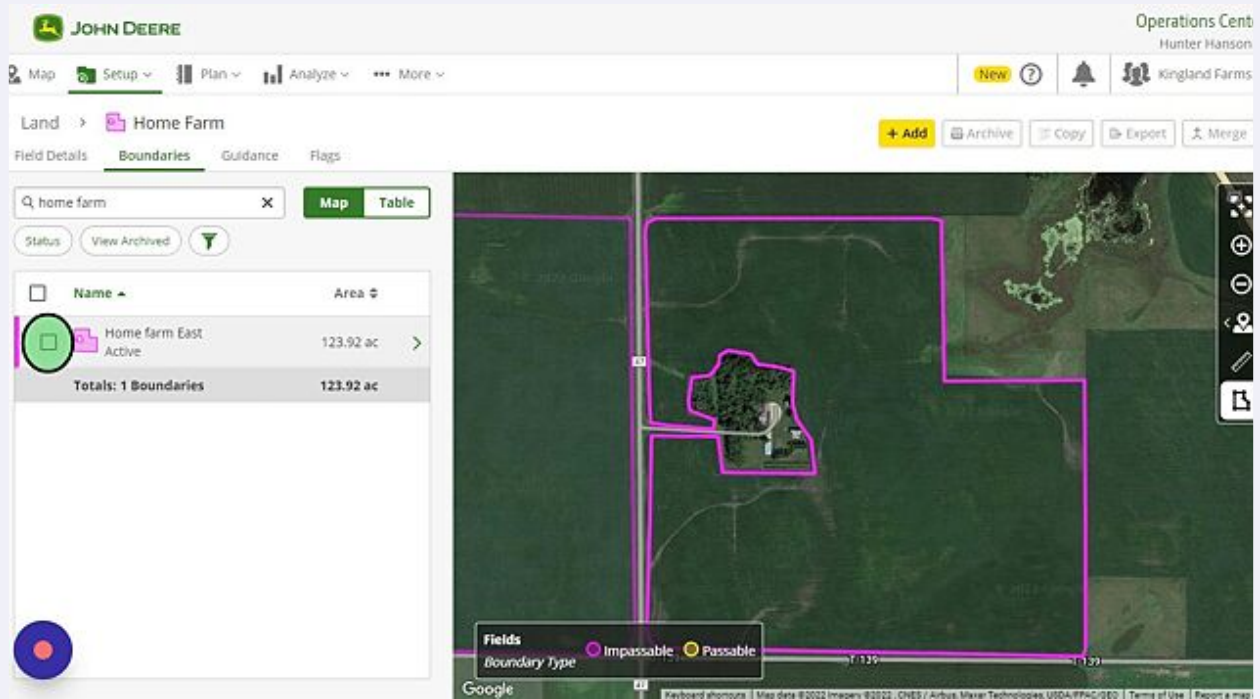
2 Find the field you would like to make changes to.



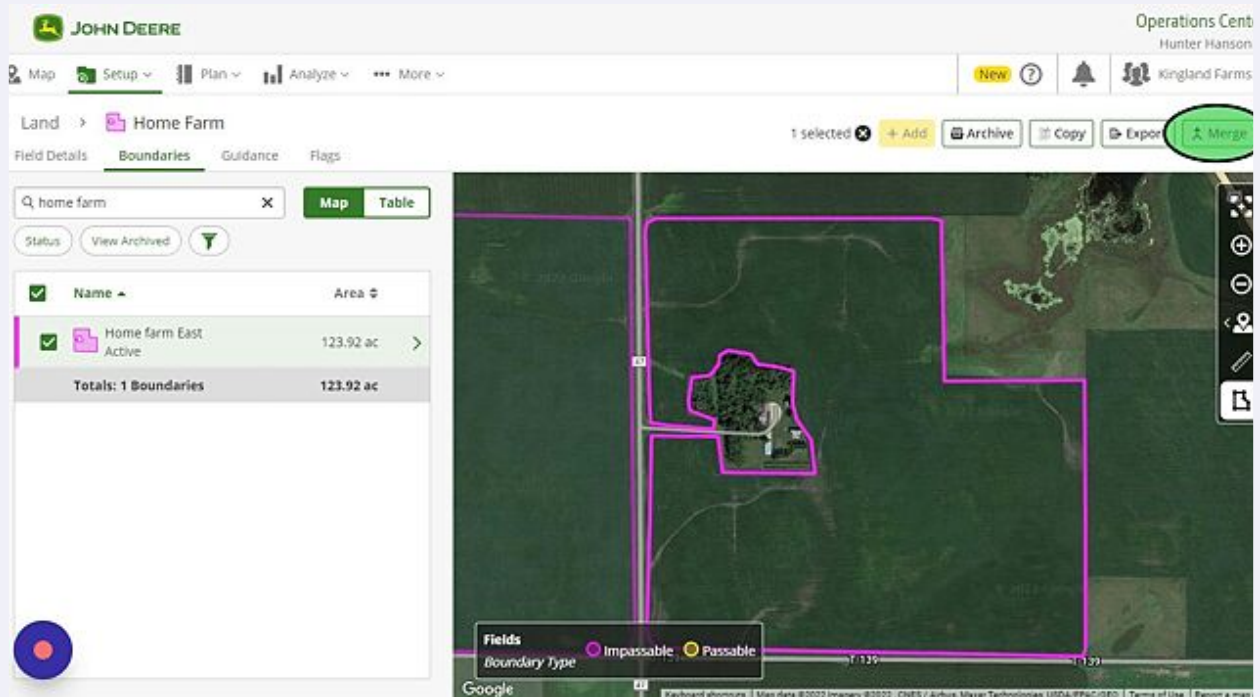
3 Select "Boundaries"



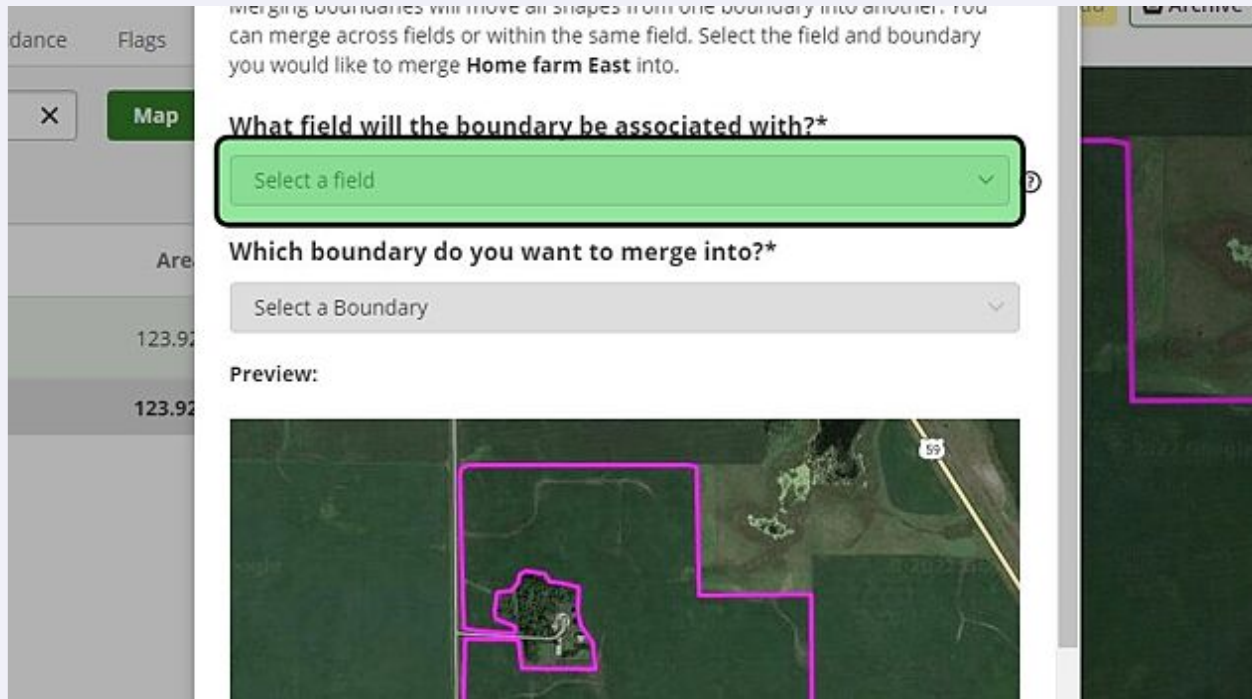
4 Click this checkbox.



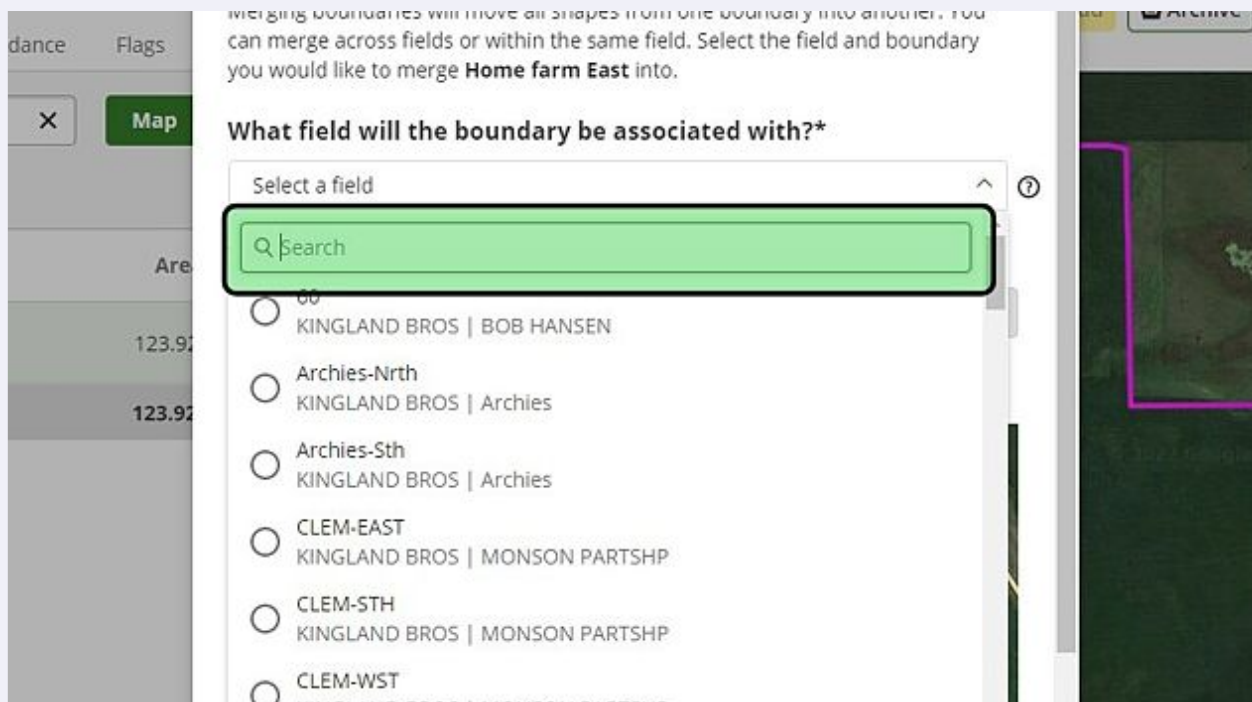
5 Click "Merge" in the upper right hand corner



6 Click the "Select a field" drop down menu



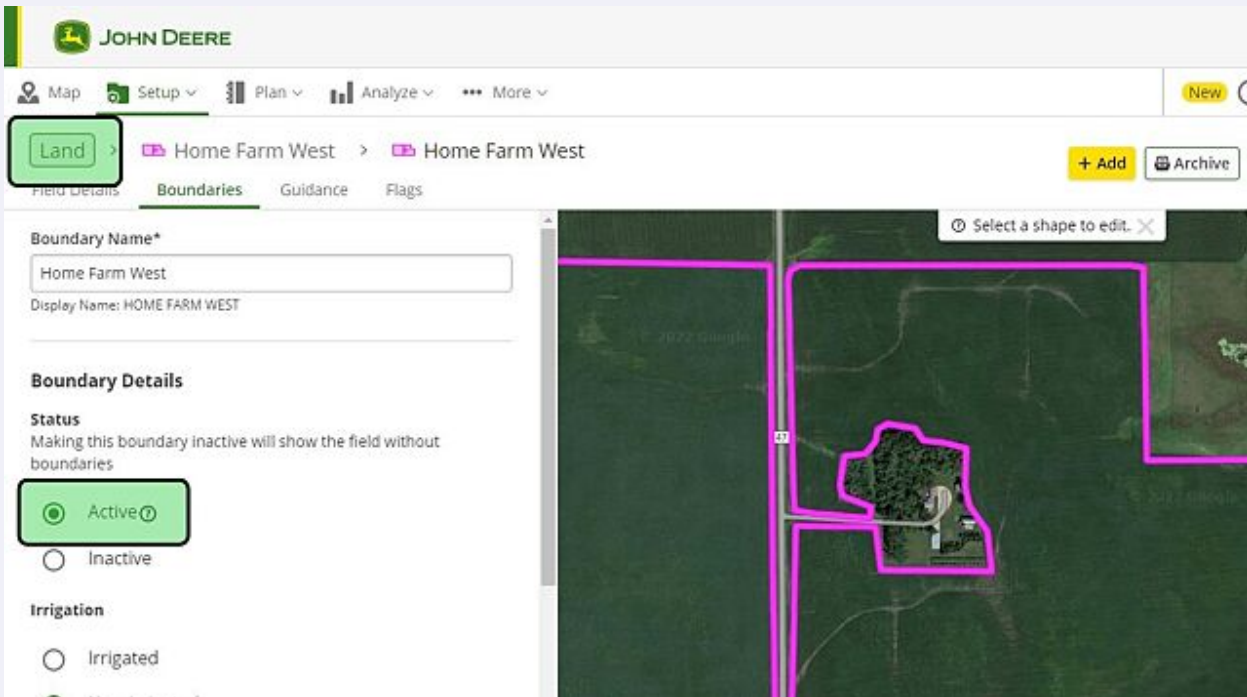
7 Type the field name in the search bar that you wish to merge boundaries with.



8 Select "Save"



9 Verify the boundary is "Active" and then select "Land"



10 Your field boundaries have been merged together into one boundary

